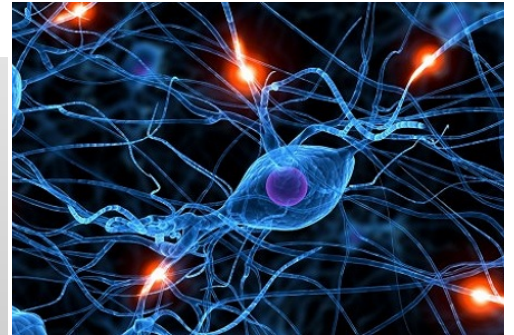


Supporting Students With Disabilities In General Education

Universal Design for Learning

UDL is for every child—general education, special education, gifted and talented, and ELLs. UDL is not a special education initiative, but a philosophical approach for designing curriculum, shaping instruction, selecting instructional materials/technology and developing assessments that provide greater access to learning for all students.

A Route for Every Learner, MSDE



This activity will address Marzano's Domain 1, Design Question 9: Communicating High Expectations for All Students. Teachers will learn how to eliminate barriers to achievement for students with disabilities in the general education classroom.

This one-day professional learning opportunity focuses on giving general education teachers strategies for working with students of varying abilities within their classrooms. Universal Design for Learning, Differentiated Instruction, Growth Mindset and the various eligibilities will be covered. Teachers of all grade levels and subject areas are welcome.

You may register in MyLearningPlan for either day:

March 23, 2018 - 8:30am-3:30pm @ Discovery Elementary School in Sunrise

April 12, 2018 - 8:30am-3:30pm @ Arthur Ashe Campus

This course is worth 8 inservice points and does count toward the ESE Renewal Requirement.